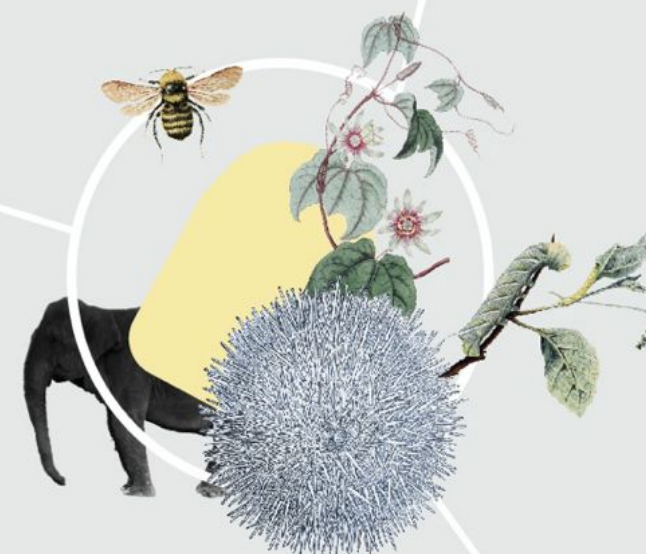
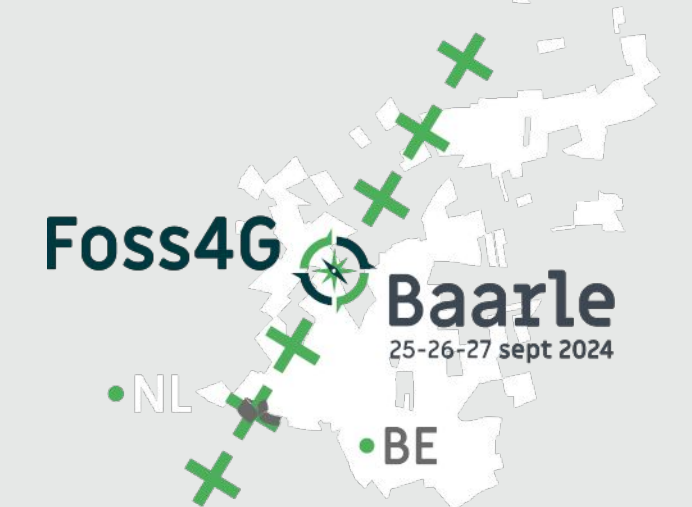
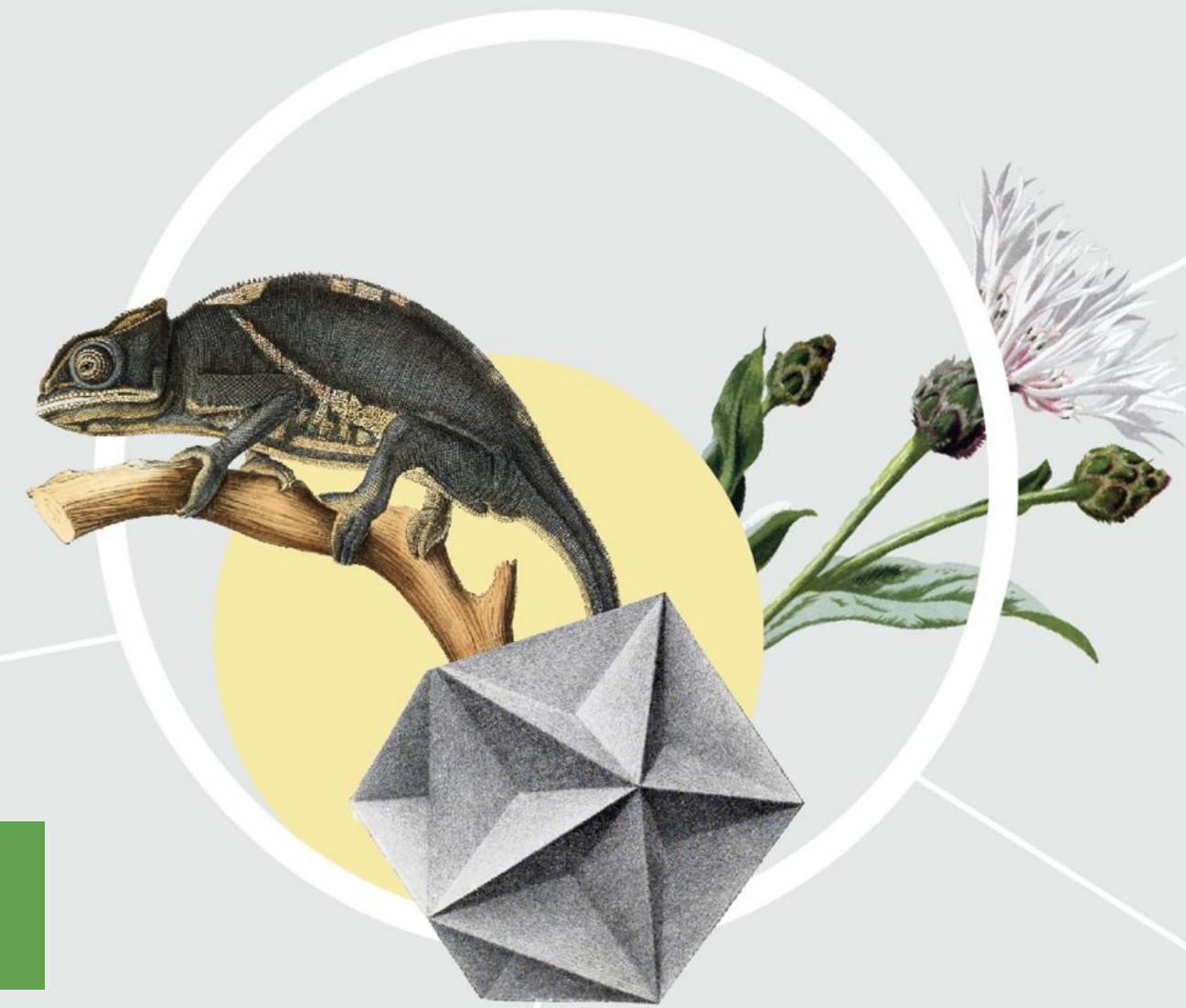




# GBIF.be Hosted Portal

André Heughebaert, Belgian Biodiversity Platform, a Belspo initiative

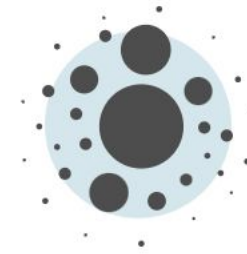
FOSS4G BE+NL, Baarle, 26 September 2024



<https://gbif.biodiversity.be/>

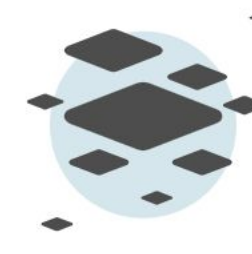


# What is GBIF?



3,008,556,914

Occurrence records



108,508

Datasets



2,283

Publishing institutions



11,046

Peer-reviewed papers  
using data

GBIF—the Global Biodiversity Information Facility—is an international network and data infrastructure funded by the world's governments and aimed at providing anyone, anywhere, open access to data about all types of life on Earth.

Coordinated through its Secretariat in Copenhagen, the GBIF network of participating countries and organizations, working through the participant nodes, provides data-holding institutions around the world with common standards, best practices and open-source tools enabling them to share information about where and when species have been recorded.



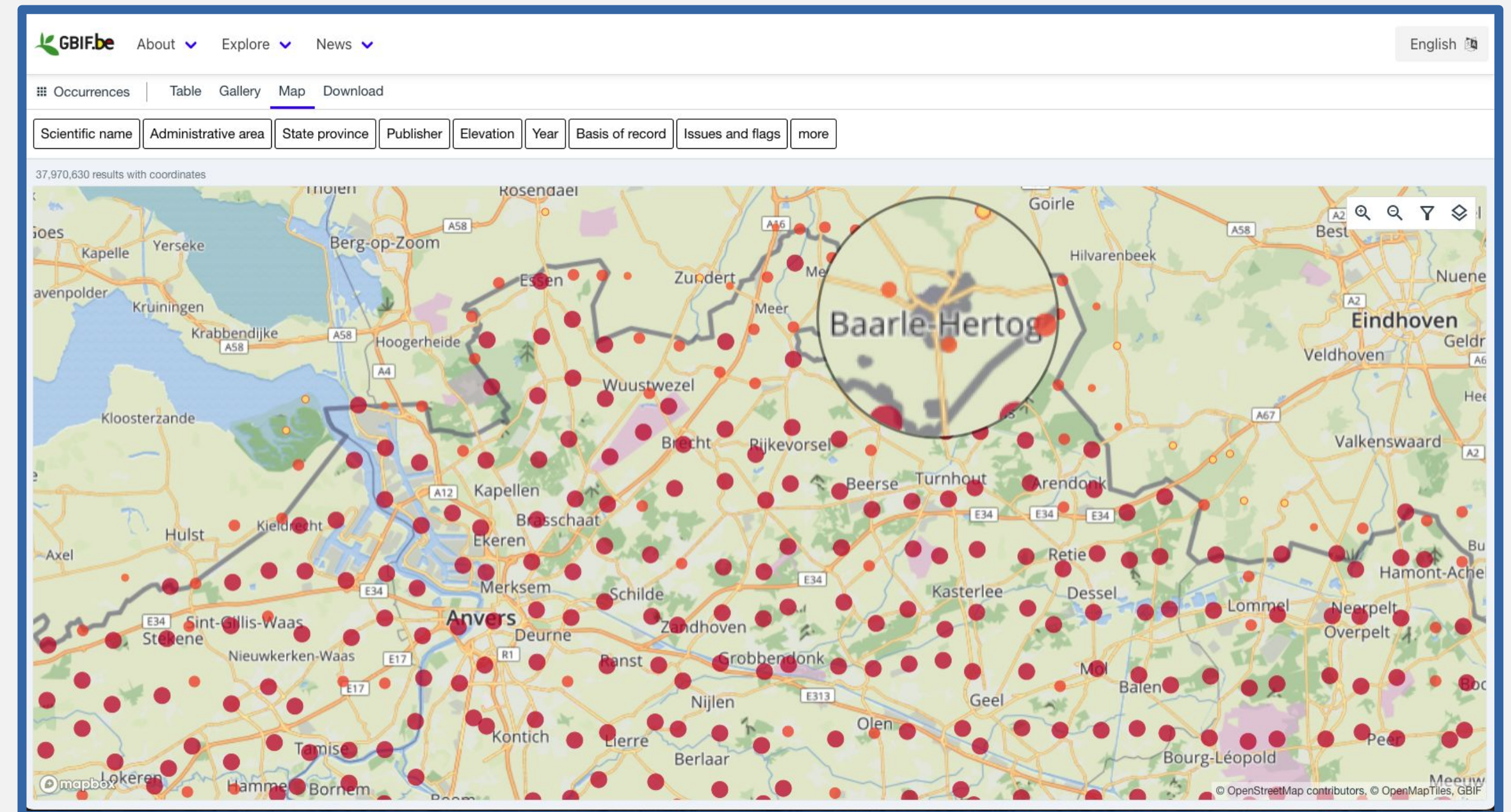
<https://www.gbif.org/what-is-gbif>



# What are the hosted portals?

A hosted portal is a simple, branded and fully customizable website that displays a targeted subset of GBIF-mediated data to support Participant nodes and their partners.

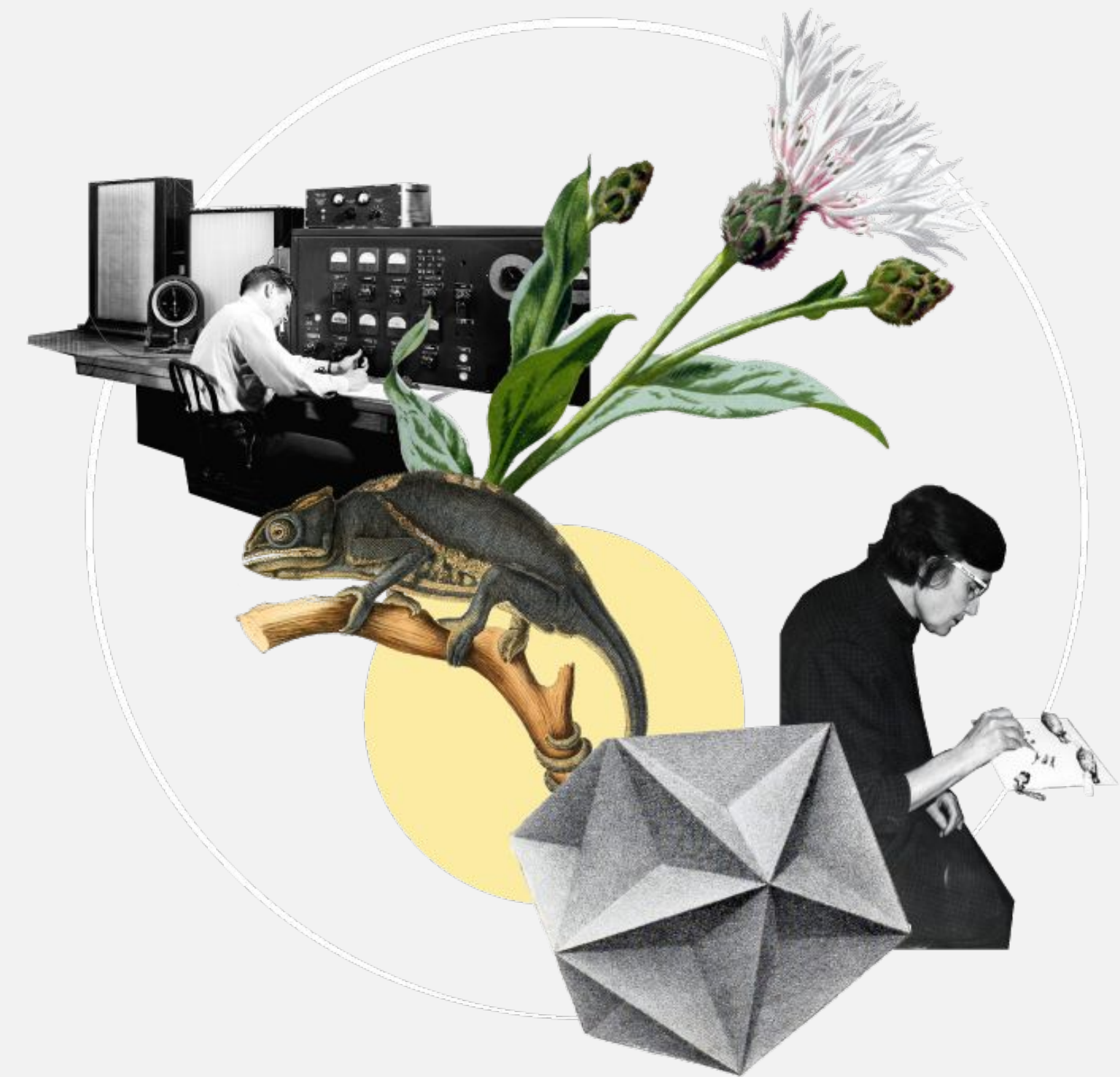
This service is designed to support biodiversity data use and engagement at national, institutional, regional and thematic scales.



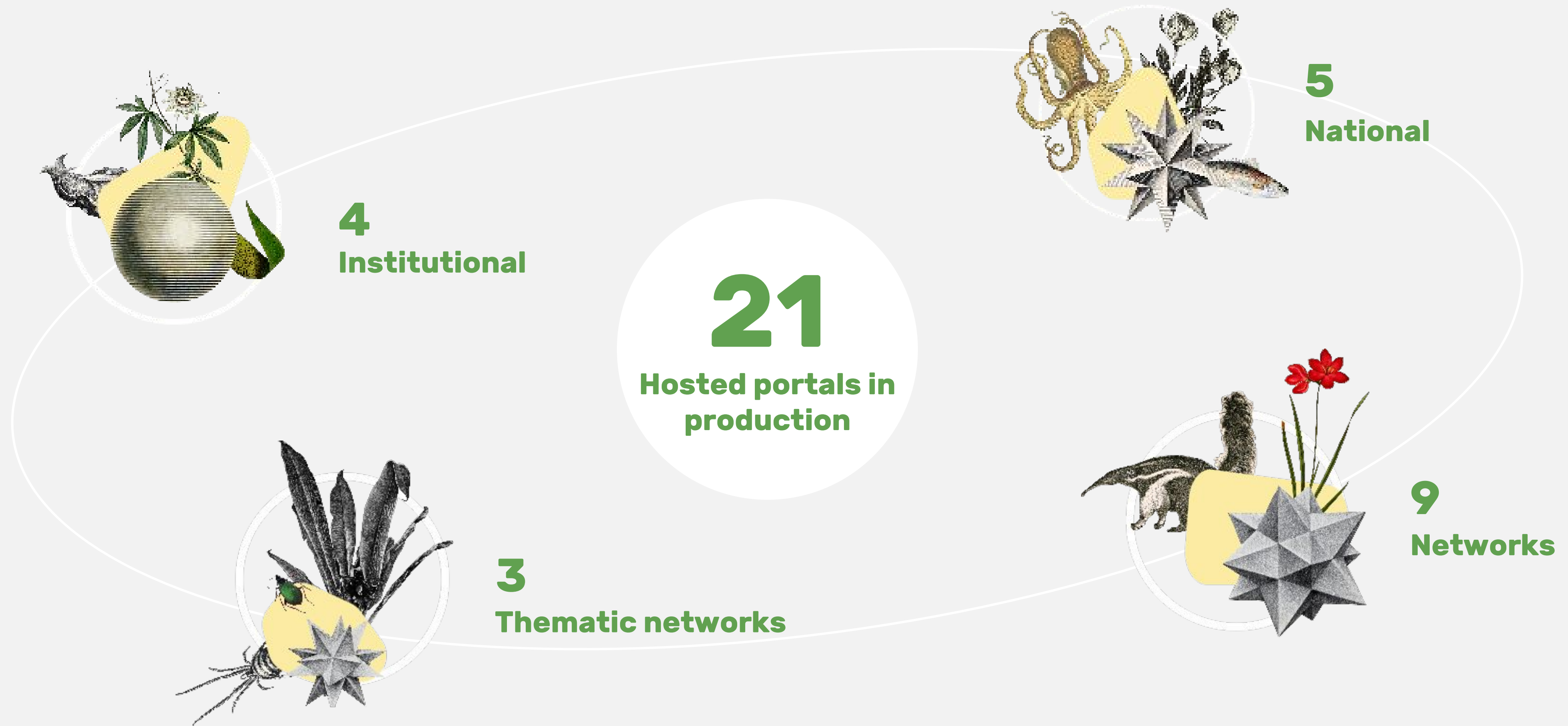
# By and for the GBIF Community

A hosted portal can benefit Participant nodes and publishers that need a simple yet fully functional data portal.

By lowering the technical demands for delivering biodiversity data, hosted portals can enable a focus on other critical activities like data management and community engagement.



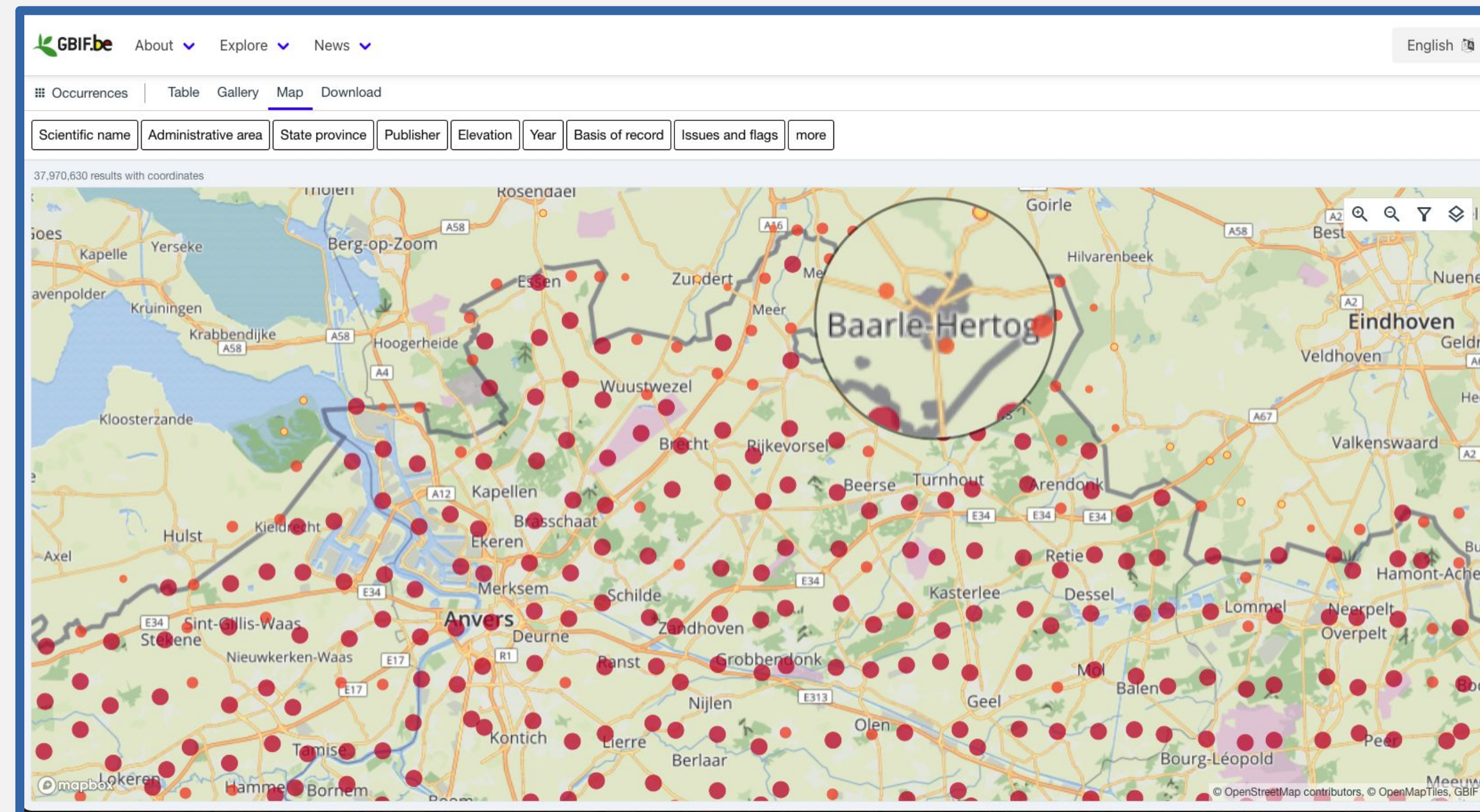
# Types of hosted portals



<https://www.gbif.org/hosted-portals>



# Check it out!



<https://gbif.biodiversity.be/>

# Underlying technologies



Based on **Jekyll** static site generator,

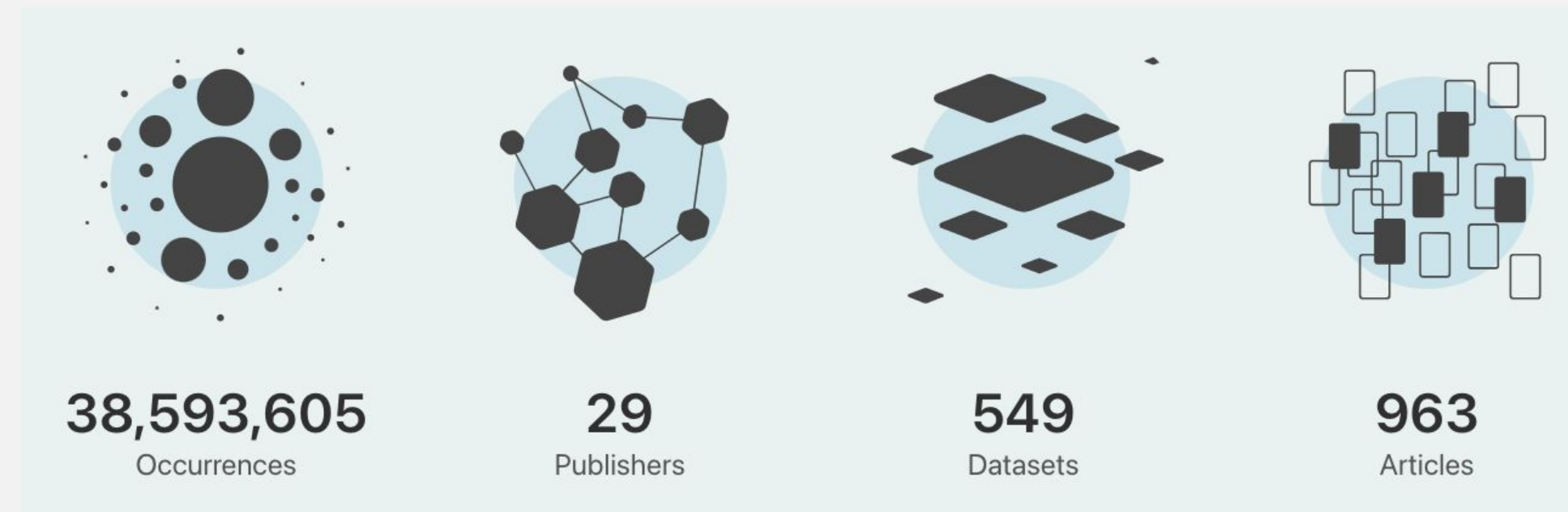
each hosted portal consists of two distinct parts:

- **Customized pages** build with **Markdown** and **YAML**
- **Data widgets** retrieving data & maps via **GBIF API** and rendering maps with **OpenMapTiles**

All hosted portals are **Open Source** with their codes available on **GitHub**.



## In a nutshell



GBIF.be Hosted Portal let you explore Open Biodiversity Data about Belgium. This is all **biodiversity data occurring in Belgium and openly shared** through the Global Biodiversity Information Facility(GBIF). Through this website, you can **explore occurrences, datasets, publishers and literature** on Biodiversity of our country. Most of the data are coming from Belgian Institutions, Public agencies, Scientists and Citizens, but some are coming from abroad thanks to data repatriation. User Interface in Dutch, English and French.

<https://gbif.biodiversity.be/>



# How can you contribute?



As a user, explore and reuse Biodiversity data.

As biodiversity data owner, [become a publisher](#) or contact your Node Manager.

You have remarks or issues, please let us know via our GitHub repository.

Feel free to share this presentation under CC BY-SA 4.0

## Thank you!

If you have questions:, [a.heughebaert@biodiversity.be](mailto:a.heughebaert@biodiversity.be)